

realize the potential



East Coast Metal Systems, Inc.
407-53rd Street | P.O. Box 217 | Bellaire, OH 43906 | www.ecmsinc.net
Phone: 740-676-2400 Fax: 740-671-8760



THE ECMS ADVANTAGE

East Coast Metal Systems, Inc. is a full service fabricator and installer of engineered architectural metal and exterior envelope systems. From project development and design to installation, we help our customers realize the potential of every project. A full service estimating team is ready to assist architects and designers with project design, detailing, engineering and budgeting. Our fabrication shop utilizes state of the art technology to minimize lead times and deliver our product on time, within budget and within the specified tolerances. When installation is required, East Coast employs highly skilled technicians trained specifically for exterior envelope systems.

SERVICES

East Coast Metal Systems, Inc. operates and maintains a full-service metal fabrication shop with the primary focus of fabricating aluminum composite panels. In addition, East Coast fabricates any architectural metal panel. East Coast provides in-house CAD shop drawings for all our fabricated products. Our estimating team can provide complete estimates and budgets for any architectural metal project. When the project demands, East Coast's skilled craftsmen can install our fabricated products while exceeding industry standards and building codes.

- Budgeting
- CAD Shop Drawings
- Design Build Assistance
- Engineering Services
- Estimating
- Field Supervision & Installation



Consol Energy
Canonsburg, PA



University of Cincinnati – Tangeman Center
Cincinnati, OH



Consol Energy
Canonsburg, PA



St. Elizabeth Health Center
Inpatient Facility
Boardman, OH



ACM PRODUCTS

East Coast Metal Systems, Inc. presents The Next Level in Exterior Cladding. We utilize code approved and fully tested attachment systems. Virtually any look can be created using both "formed pan" systems or moldings.

AVAILABLE FINISHES

- Kynar 500®
- Kynar 500® Metallic
- Anodized
- Raised Patterns
- Etched metal
- Custom Colors
- Stainless Steel
- Copper
- Zinc

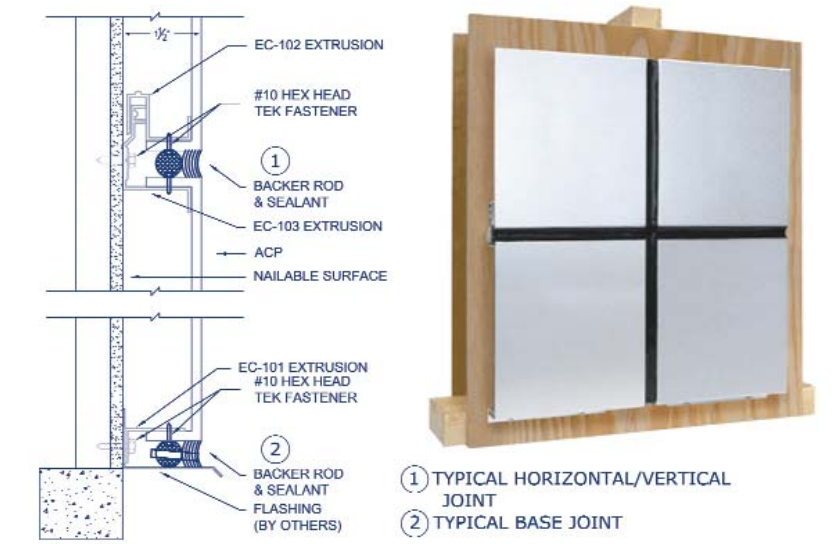
ARCHITECTURAL METALS

In addition to ACM's, East Coast Metal Systems, Inc. offers fabrication and installation of many other architectural metals. ECMS can provide metal roofing & siding from a variety of manufacturers.

- Architectural Metal Roofing
- Architectural Metal Siding
- Custom Architectural Fabrications
- Louvers
- Sunshades
- Screenwalls

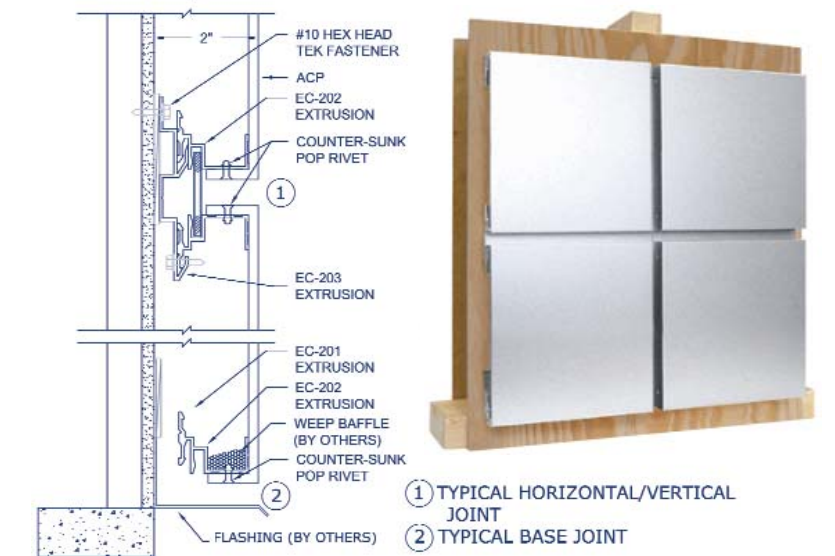
EC-100

The Rout & Return System is a barrier system featuring a wet-sealed joint in which the panels are fabricated and formed into 'pans' and then mounted to the substrate using aluminum extrusions. All fasteners are concealed and panel joints (1/2" reveal typical) are finished with an approved sealant.



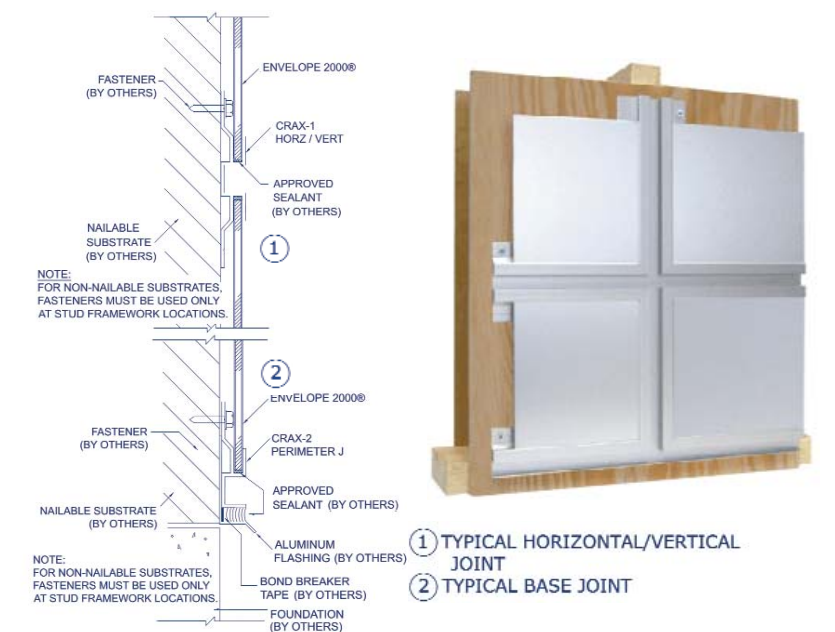
EC-200

The RainScreen System is a dry joint system that allows incidental water to enter the cladding cavity, but then be drained through the system via weepholes. Also utilizing formed panels, this system is mounted using aluminum extrusions. Panel joints are finished using color matched or complementary accent strips that 'float' within the extrusions allowing a reveal from 1/2" to 12."



Envelope 2000® RV

The Reveal System utilizes one piece extruded aluminum moldings. This barrier system features a progressive installation. The moldings are mechanically fastened to the substrate and then the panels are inserted into the moldings, along with sealant. The panel is adhered to the substrate at the intermediates with construction adhesive. Reveal (1/2" typical, 3" also available) and batten profile moldings are standard.



Envelope 2000® RV is a registered trademark of Citadel Architectural Products.